

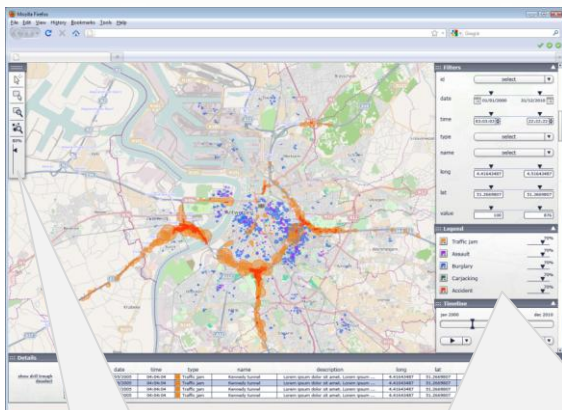
x marks the spot

ViDa Maps Advanced Geo Visualization

Where does my data go?

Plotting data on maps is only the beginning. So where to start? ViDa Maps is a geo reporting plug and play widget that enables **interactive** functionality of encapsulated data on maps.

ViDa Maps, real support for geo spatial analysis.



Easily use ad hoc context filters such as dropdowns, data ranges, etc.

The Filters panel is a vertical sidebar on the right side of the map. It contains several filter controls:

- id**: A dropdown menu with 'select' as the current value.
- date**: A date range selector with '01/01/2000' and '31/12/2010' as the range.
- time**: A time range selector with '03:03:03' and '22:22:22' as the range.
- type**: A dropdown menu with 'select' as the current value.
- name**: A dropdown menu with 'select' as the current value.
- long**: A longitude range selector with '4.41643487' and '4.51643487' as the range.
- lat**: A latitude range selector with '51.2669807' and '51.3669807' as the range.
- value**: A value range selector with '100' and '876' as the range.

Dynamic legend allowing hot spot analysis based on color density and transparency.

Standard toolset for zooming and selection.

Take advantage of the analytical potential of maps.

Drillthrough

id: 3
type: traffic jams

GeoRecord details GeoRecord details 2

id	type	date	time	name
3	traffic jams	1980-12-16	00:00:00	third jam
3	traffic jams			bird jam

Drill through functionality used for analysis of the lower grain data for the selected marker.

Timeline

16 Dec 1980 00:00:00 16 Dec 1992 12:00:00

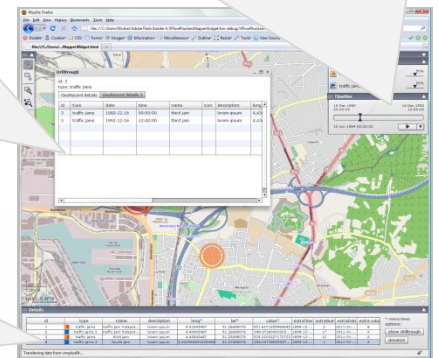
10 Jun 1984 03:33:02

The timeline option allows you to play the evolution of the plotted facts through time.

List details of the plotted data.

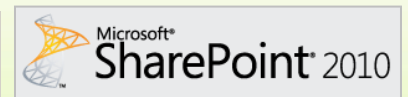
Details

id	type	name	description
1	traffic jams	traffic jam hotspot...	lorem ipsum
2	traffic jams 2	traffic jam hotspot...	lorem ipsum
3	traffic jams	third jam	lorem ipsum
4	traffic jams 2	fourth jam	lorem ipsum



Data Providers

Currently, the ViDa Maps data providers connect to Google Spreadsheets, Microsoft SharePoint™, SPARQL endpoints and IBM Cognos 8 BI to retrieve their data from. Yet short, this list is endlessly exhaustive thanks to the open architecture of the data provider's component.



xplore+ VoF • Overhemstraat 25 • Meldert, 3320
 +32(0)16 81 84 47 • +32(0)479 52 76 80
 www.xploreplus.com • info@xploreplus.com

Mapminding your data.

